

14 years
World No.1*

JACK

AMH2

UNLOCK THE POTENTIAL OF ALL FABRICS

Octopus Dual-
Core AI Chip



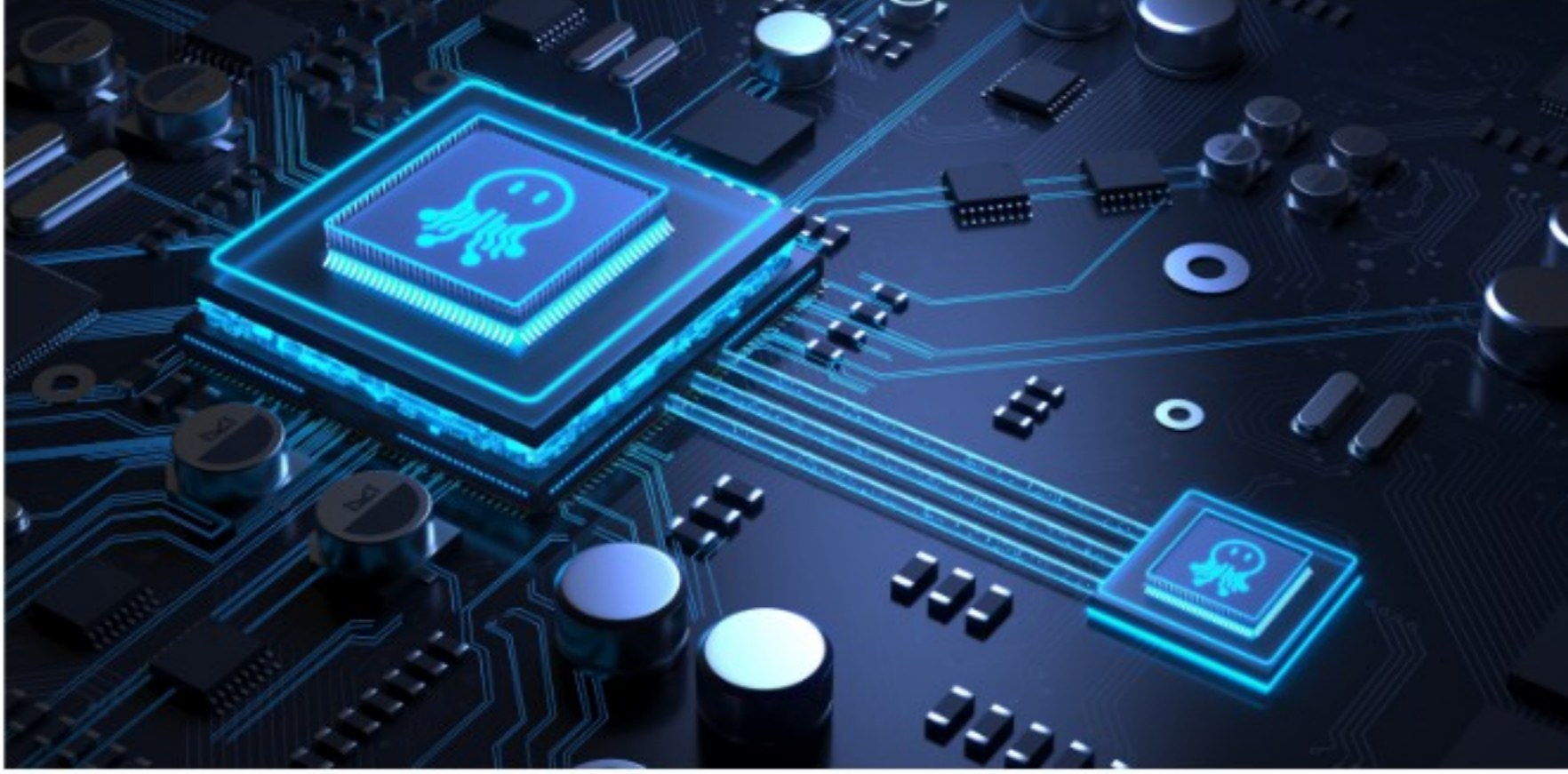
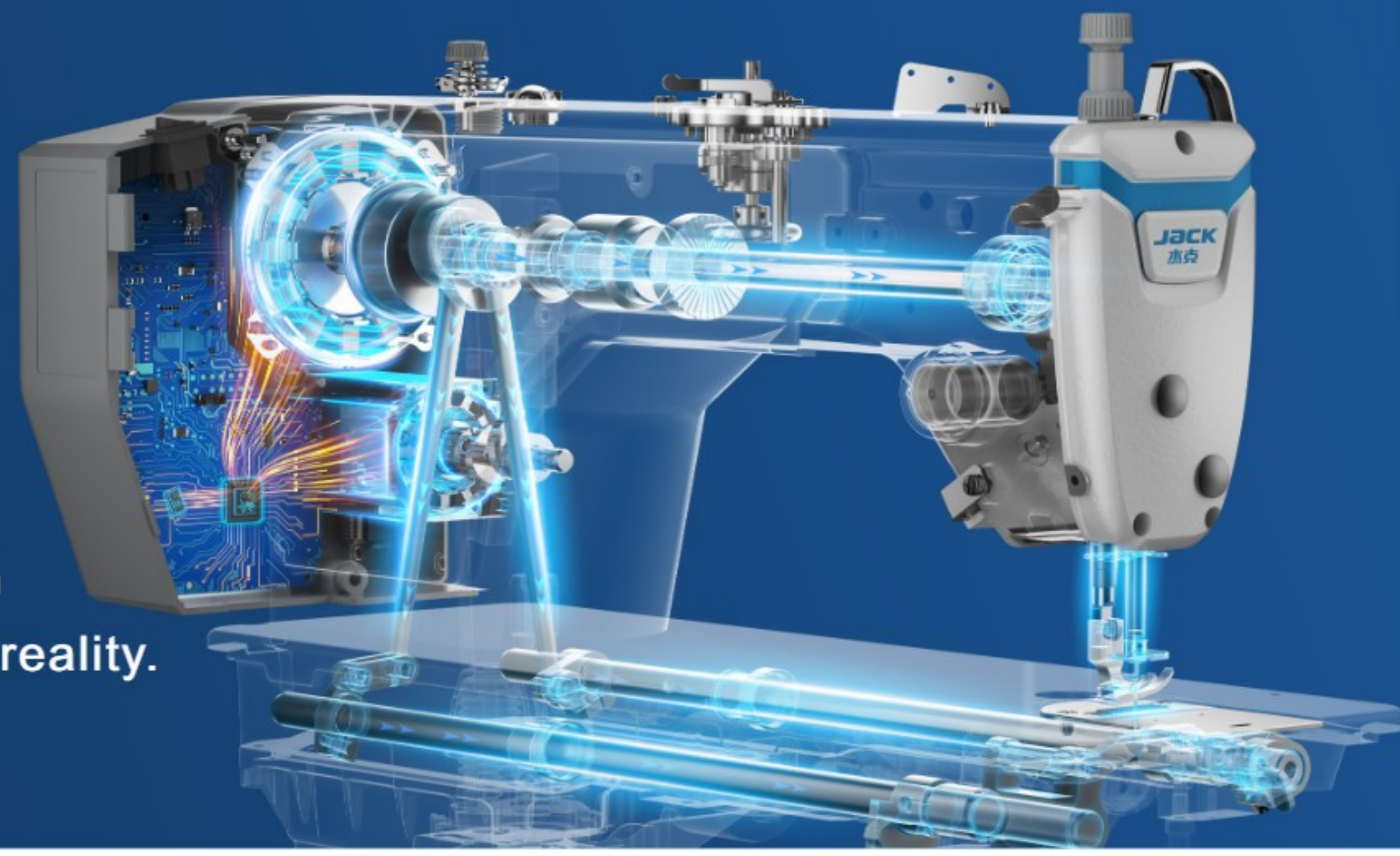
Vigorous Ape
Dual-Drive Motor

*Source: Frost & Sullivan's research based on the number of industrial sewing machines sold by major global industrial sewing machine companies in each year between 2010 and 2023, market research completed in September 2024.



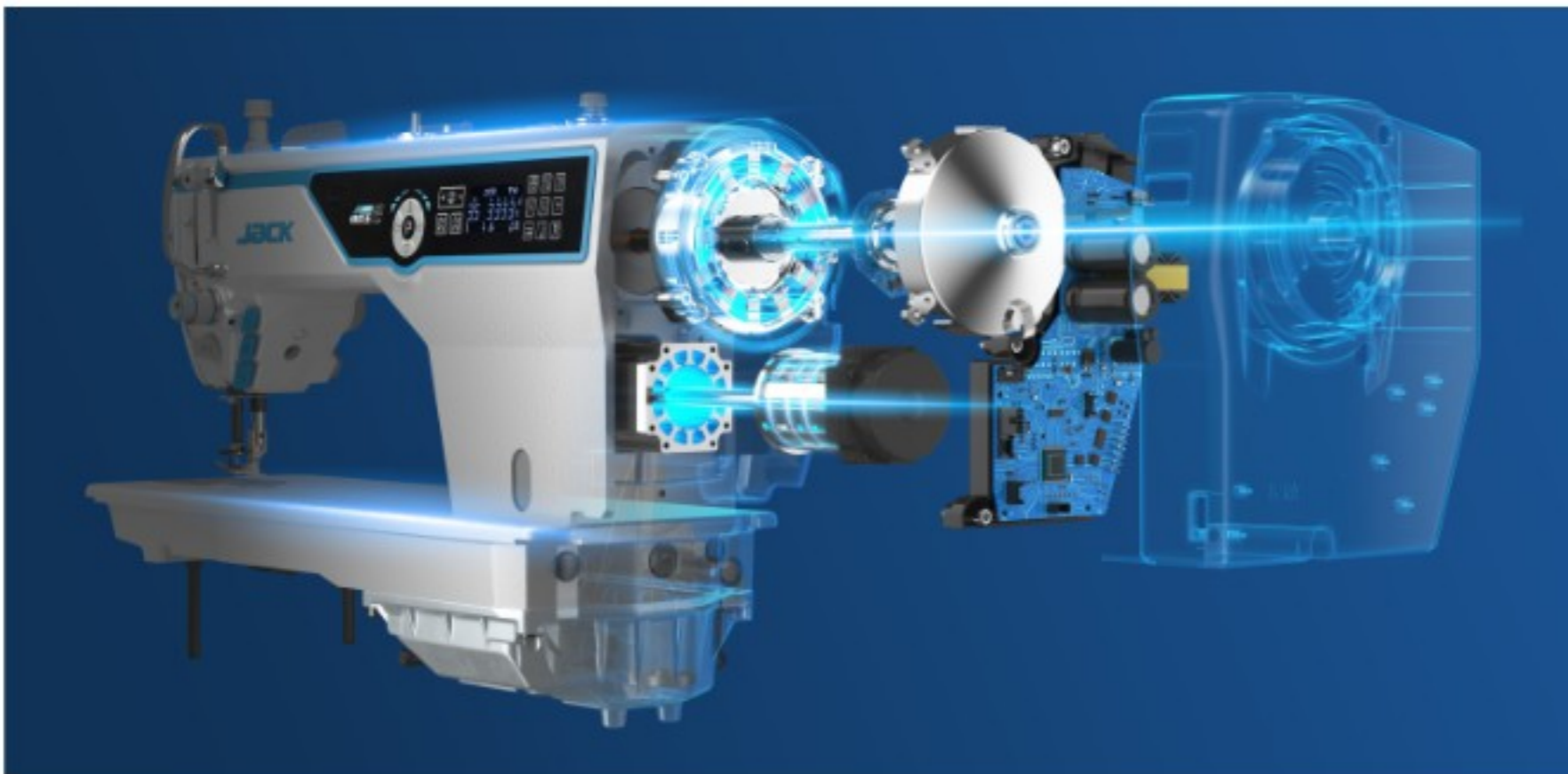
Smart Fabric Adaptive System

The Octopus Chip detects changes in fabric and seams at lightning speed, calculating optimal parameters. The Vigorous Ape Motor then delivers precise penetration and feeding force, making non-stop sewing of all fabrics a reality.



Octopus Dual-Core AI Chip: Next-Gen Chip. **10x** More Power.

- **22 million** device data models + **100,000** ops/sec + AI-tuned algorithms.

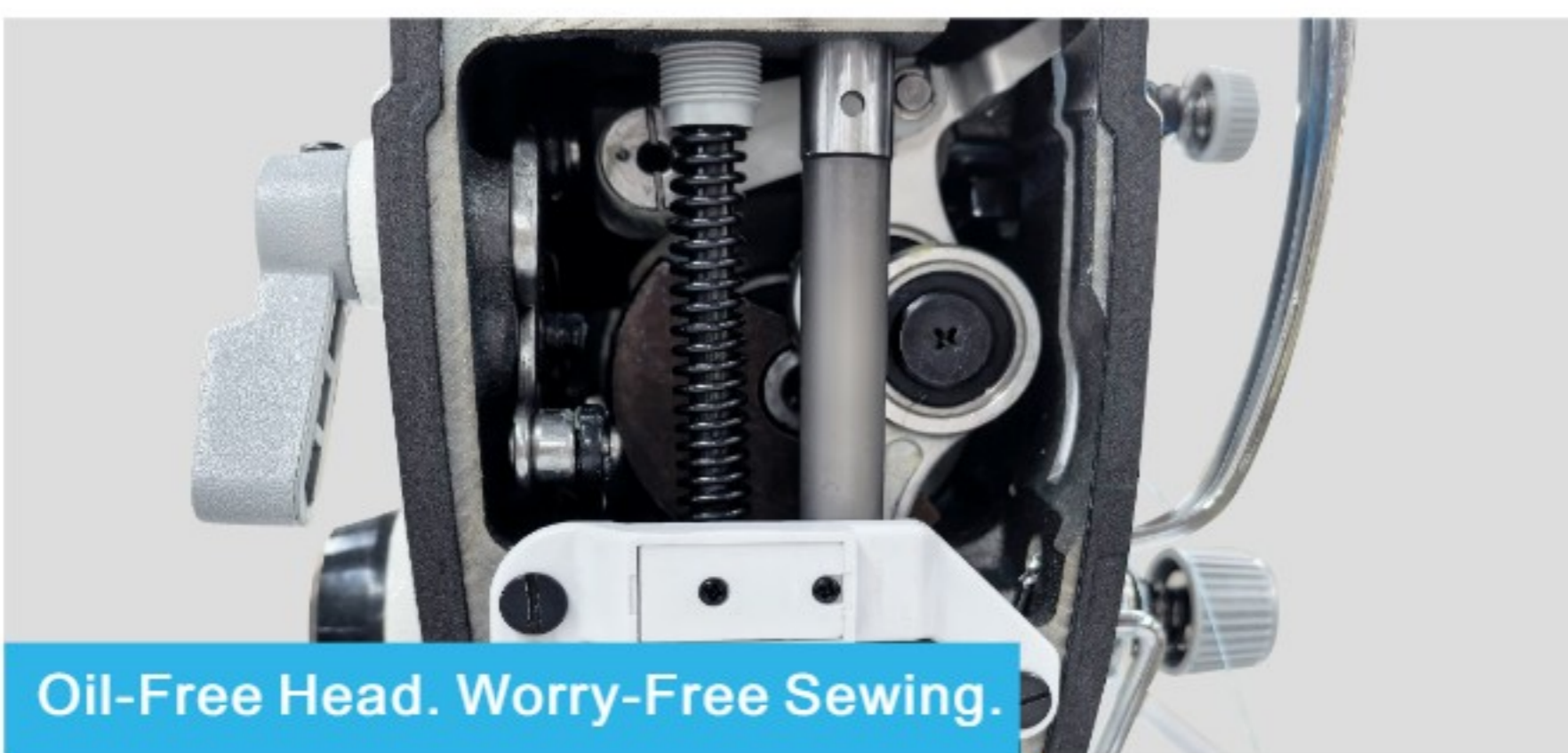


Effortless 18-Layer Denim Stitching

Penetrates 100 Layers of A4 + 10 Layers of Copper with Ease

Vigorous Ape Dual-Drive Motor : **4x** Faster Motor Response

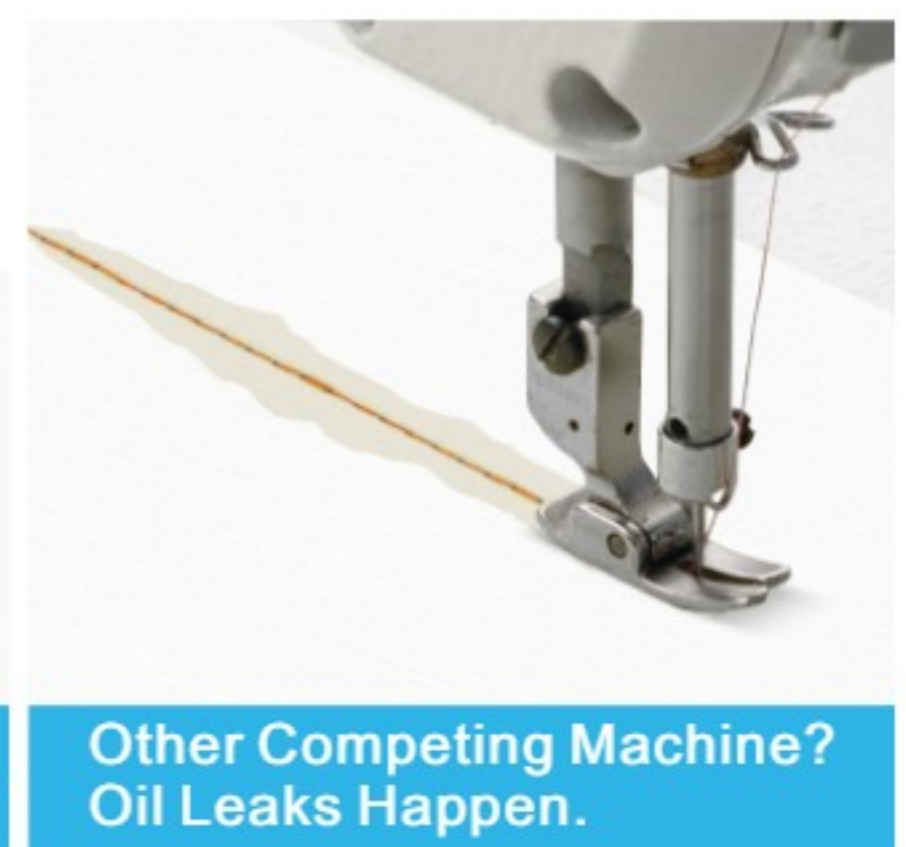
- **11.3Nm** peak torque, **22.5%** higher power density.



Oil-Free Head. Worry-Free Sewing.



AMH2's Oil-Free Head Design



Other Competing Machine? Oil Leaks Happen.

Clean Sewing. No Oil. No Stains.

- Oil-free head design keeps your machine clean and your fabric pristine.

Technical Parameters

Model	Needle	Thread Number	Stitch Length (mm)	Height of Presser Foot (mm)	Max. Sewing Speed (S.P.M)	Thin Materials	Medium Thick Materials	Thick Materials	Volume (mm)	Weight (kg)
A5E-B	DBX1 11-18#	2	5	1-13	5000	√	√		690x295x550	42.5/48.6
A5E-B-N	DBX1 11-18#	2	5	1-13	5000	√	√		690x295x550	43/49
A5E-B-H-7	DPX5 18-21#	2	7	1-13	3500			√	690x295x550	42.5/48.6
A5E-B-7	DBX1 11-18#	2	7	1-13	3500	√	√		690x295x550	42.5/48.6